

Moths of Fung Yuen SSSI & Butterfly Reserve – a preliminary investigation

Roger C. Kendrick

Fauna Conservation Department, Kadoorie Farm & Botanic Garden, Lam Kam Road, Tai Po, N.T., Hong Kong.
email: moths@kfbg.org

ABSTRACT

A summary of two light trap recording events and other opportunistic diurnal recording events of moths at Fung Yuen Site of Special Scientific Interest and Fung Yuen Butterfly Reserve, Tai Po, New Territories, Hong Kong is presented. A total of 387 species was recorded, of which seven species are recorded from Hong Kong for the first time, and a further 6 species await confirmation of being new records to Hong Kong. Based on the available data, 18 species are of conservation concern, five potentially meet IUCN Red List criteria for threatened species in one of the three main categories “Critically Endangered” (two species), “Endangered” (two species) and “Vulnerable” (one species) and a further 13 species potentially meet “Near Threatened” criteria. For the time being these 18 species should be regarded as IUCN Data Deficient, pending further investigation. Twelve of the species recorded are currently only known from Hong Kong; all are among the 18 species of conservation concern. Although based upon just two light trap surveys and a small amount of opportunistic diurnal recording, it is likely that the moth species richness at Fung Yuen will prove to be one of the highest in Hong Kong, mirroring the butterfly species richness for which the site is already renowned. The high number of new records to Hong Kong and the number of species potentially meeting IUCN Red List criteria for threatened species from such a small amount of recording effort suggests that the site is of conservation significance for moths. The moth assemblages recorded are typical of human-disturbed forest, feng shui woods and orchards, with a relatively low Geometridae component, but include only a small number of low-conservation interest species normally associated with agriculture and open habitats that were found in the SSSI.

Key Words: Lepidoptera, moths, checklist, Fung Yuen, Hong Kong, IUCN Red List

INTRODUCTION

Following a request by Tai Po Environmental Association (TPEA), the Fauna Conservation Department of Kadoorie Farm & Botanic Garden (KFBG) agreed to undertake two moth surveys at Fung Yuen Site of Special Scientific Interest (SSSI) and the adjacent Fung Yuen Butterfly Reserve, Tai Po, New Territories, Hong Kong (see Figure 1 for site location map) to provide a baseline documentation of the moth diversity there. The surveys took place on 24th April and 16th October 2009. The work (Kendrick, 2010) adds to previous Lepidoptera work undertaken at the site in a conservation project summarised by Yau et al.

(2007). Other unpublished historical data on the moth assemblage at Fung Yuen is also held by KFBG as part of the KFBG insect collection and by the author, to whom was passed the unpublished moth recording notes of the late Kent H.K. Li, by his wife, in October 2008. There also exists a growing body of information on the moths from Fung Yuen on two Internet website forums, Hong Kong Wildlife Net (www.hkwildlife.net), whose moth forum is moderated by the author, and the Hong Kong Moths group on Flickr (www.flickr.com/groups/hongkongmoths/), also administered by the author. This paper was brought about to pull together the unpublished information with the data from the moth survey in 2009 (Kendrick, 2010), upon which this paper is based, so as to provide as much information as possible to assist TPEA with the wildlife conservation management of Fung Yuen.

The history of the site is documented by Tai Po Environmental Association (2004). It had been actively farmed for some 300 years until the 1970s and, following the expansion of Tai Po in the late 1970s and 1980s, became abandoned due to migration of the villagers for work elsewhere. The site is now managed by TPEA in a private-public partnership with the local village landowners and with funding provided by the Environment & Conservation Fund. Due to multiple ownership of land, the site contains a mosaic of habitats, comprising orchards, abandoned agricultural land (paddy / marsh), a few streams, regenerating secondary forest, some grassland and shrubland. Small areas of the site (Koo Ka Garden within the SSSI and Phase 1 of the Butterfly Garden, see Figure 1) are actively managed to encourage butterflies through the planting of nectar-rich plants and butterfly larval hostplants. The site was designated as a SSSI on the basis of its high butterfly species richness.

METHODS

Moth recording by KFBG took place with ultra violet emitting lights (125W MBF mercury vapour lights) either mounted on Robinson or Skinner traps (Fry & Waring, 2001), or mounted on a tripod and projecting onto a white sheet, on 24 April 2009 and 16 October 2009. Traps were located at least 50m apart (locations shown on Figure 1) to maximise coverage of the site, noting that the effective trapping radius of the light sources varies according to habitat and moon phase (Frank, 1988; Nowinszky, 2004). Other records were made from daytime larval searching and opportunistic observations of adult moths, recorded photographically and posted to Hong Kong Wildlife Net or Flickr, or recorded with a voucher specimen now housed at the KFBG insect collection. Precise location data for the recording events

Figure 1(a) Location of Fung Yuen SSSI & Butterfly Reserve within Hong Kong.



was only noted for the KFBG sessions (using a Garmin global positioning system unit GARMAP 60 CSx); for the remaining observations, no record exists of which part of Fung Yuen the observations were made.

Moths were identified to species level wherever possible, based upon Kendrick 2002(2003), updated following Clarke (1965), Robinson et al. (1994), Holloway (2005, 2008, 2009), Kononenko & Pinratana (2005) Wang & Kendrick (2009) Wang et al. (2009) and Li et al. (2010). Sesiidae were identified to genus by Axel Kallies (pers. comm.), based upon Arita & Gorbunov (1995) and Pühringer & Kallies (2004). Voucher specimens retained from the KFBG survey are housed in the KFBG insect collection.

Assessment of species against IUCN Red List criteria (IUCN, 2001) follows and adds to work undertaken by Kendrick (2007),

Fig. 1(b) plan of Fung Yuen SSSI & Butterfly Reserve, indicating locations recorded by the KFBG survey.



including the existing “Hong Kong Moth Recorder” database of the author, amounting to just over 60,000 records, and Chinese distributional data from collections at South China Agricultural University and Nankai University Insect Collection. The species richness ratio of Geometridae to Noctuidae (following Kitching et al., 2000) was compared with that of Kadoorie Farm to gain insight on the level of disturbance at Fung Yuen.

RESULTS

A total of 387 moth species from 36 families are herein documented to have been recorded from Fung Yuen SSSI and Fung Yuen Butterfly Reserve. These species are listed in Appendix 1, in taxonomic order to subfamily, based upon Kendrick (2004), updated for Noctuoidea according to Lafontaine & Schmidt (2010). A total of 18 species of conservation concern are found at Fung Yuen (Table 1).

Table 1. Moth species found at Fung Yuen which potentially meet IUCN Red List criteria for endangered / near threatened species, all must be regarded as IUCN Data Deficient pending further investigation

provisionally Critically Endangered (CR) criteria B1 (extent of occurrence) and D1 (small population)	provisionally Near Threatened (NT) criterion B2 (area of occupancy)
<i>Stereodytis brevignatha</i> Wang & Kendrick, 2009 <i>Ichneumonella</i> sp. A	<i>Dasyses</i> sp. nr. <i>correpta</i> <i>Edosa</i> sp. B <i>Edosa</i> sp. C <i>Promalactis biovata</i> Wang, Kendrick & Sterling, 2009 <i>Aeolanthos</i> sp. nr. <i>erebomicta</i> <i>Psilalcis galsworthyi</i> Sato, 1996 <i>Sigilliclystis kendricki</i> Galsworthy, 1999 <i>Scopula</i> sp. C (undescribed) <i>Apha</i> sp. A (undescribed) <i>Bellulia galsworthyi</i> Fibiger, 2008 <i>Cerynea discontenta</i> Galsworthy, 1998 <i>Ugia purpurea</i> Galsworthy, 1997 <i>Athetis hongkongensis</i> Galsworthy, 1997
provisionally Endangered (EN) criteria B2 (area of occupancy) and D1 (small population)	
<i>Stereodytis acutidens</i> Wang & Kendrick, 2009 <i>Macrotarsipus</i> sp. A	
provisionally Vulnerable (VU) criteria B2 (area of occupancy) and D1 (small population)	
<i>Luceria striata</i> Galsworthy, 1997	

Further significant records from the KFBG survey were at least seven species that have not been seen in Hong Kong before; they are *Hyphenagonia* sp. A, *Mecodina diastriga* Hampson, 1926 (subsequently recorded at KFBG the following night and seen at KFBG, Tai Po Kau Headland and Ng Tung Chai in 2010 (pers. obs., unpublished data), *Frisilia* sp. A, *Frisilia* sp. B, *Faristenia* sp. A, *Helcystogramma* sp. A and *Nepticulidae* sp. A. Identifications on the six unidentified species are in progress. In addition, records of another five species tentatively identified as *Cosmopterigidae* sp. indet. 1, *Assara* sp. indet. 2, *Helcystogramma* sp. indet. B, *Epicephala* sp. indet. 1 and *Psychidae* sp. indet. 1, may also be first records for Hong Kong, though this is subject to comparison with collections in the B.P. Bishop Museum, Honolulu, The Natural History Museum, London and the collection of M.J. Sterling, St. Albans, England.

A further 10 species of local conservation interest occur at Fung Yuen SSSI & Butterfly Reserve. In the April 2009 survey, there were three other species, *Nolini* sp. indet. #1, *Pelosia* sp. indet. #1 and *Comibaena cassidara* (Guenée, 1857 [1858]), recorded for the second, fourth and seventh time, respectively, in Hong Kong. Other rare species include *Ramadasa pavo* (Walker, 1856) (Figure 2) and *Araeopteroninae* sp. 1 (possibly also undescribed) (Figure 3). During the October 2009 survey, other notable species recorded included a 5th Hong Kong record of the plume moth *Stenoptilia taprobanes* (Felder & Rogenhofer, 1875), an unidentified snout moth (*Pleuroptya* sp. A, Figure 4) representing a likely new species for Hong Kong, the third site in Hong Kong for the unidentified fan-foot moth *Herminia* sp. A (Figure 5) and 5th Hong Kong records for the leaf-twirler *Dichomeris microsphena* (Meyrick, 1921) and the china-mark *Eristena* sp. nr. *bifurcalis*. Also of interest was the occurrence of the fruit-piercing noctuid moth *Oraesia emarginata* (Fabricius, 1794) (Figure 6), a close relative of Hong Kong's own blood-sucking (see Zaspel et al., 2007) moth, *Calyptra minuticornis* (Guenée, 1852). During both KFBG surveys, one further species of note was recorded, *Chorsia perversa* (Walker, 1863), indicating that a well established population of this species exists at Fung Yuen. Only single individuals had been seen in Hong Kong prior to the eight seen over the two surveys at Fung Yuen.

Fung Yuen appears to be the most important site in Hong Kong for the epiplemine moth *Orudiza protheclaria* Walker, 1861, with at least four (of five from Hong Kong) recent records of this species, which was noted by Holloway (1998) from Borneo as uncommon (as it is in Hong Kong), "all recent material being taken in lowland alluvial forest regenerating on abandoned farmland" – a similar habitat to Fung Yuen; globally the species is recorded from the Oriental tropics to Sulawesi (Holloway, 1998).

Figure 2. *Ramadasa pavo* (Noctuidae, Bagisarinae) – a rare moth in Hong Kong, confined to three sites in the central New Territories

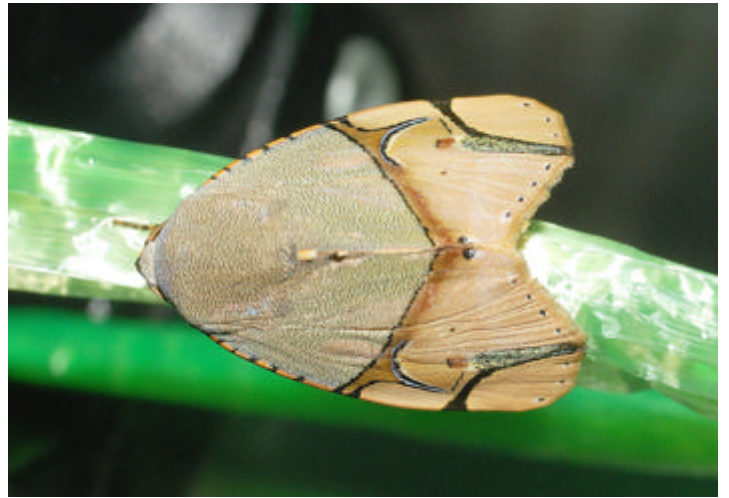


Figure 3. *Araeopteroninae* sp. indet. A (Erebidae) – one of the many undescribed species of moth found at Fung Yuen during the surveys



Figure 4. *Pleuroptya* sp. A (Crambidae, Spilomelinae) – an unidentified snout moth that may be a new record for Hong Kong



Figure 5. *Herminia* sp. A (Erebidae, Herminiinae) – an unidentified, and possibly undescribed, fan-foot moth; Fung Yuen is the third known site for this species



Figure 6. *Oraesia emarginata* (Erebidae, Calpinae) is a close relative of the blood-sucking moth *Calyptra minuticornis*, which was also recorded at Fung Yuen



DISCUSSION

Considering the present study only covered two surveys, there were a high number of species new to Hong Kong and also several species which have the potential to meet the IUCN Red List criteria for threatened species (IUCN, 2001), indicating that the site has a high conservation value, mirroring the high butterfly species richness found at Fung Yuen. It must be noted that all the species in Hong Kong should, strictly speaking, be regarded as Data Deficient for IUCN Red List analysis, as there is little published data available on the distribution and assemblages of moths in the South China region. The collections at South China Agricultural University and Nankai University, Tianjin,

contained none of the suspected Hong Kong endemic species from localities outside Hong Kong. Further recording throughout Guangdong and Guangxi will help establish an understanding of moth distributions and populations at the regional level, with particular emphasis on sites near Hong Kong to the north, north-east and east-north-east, such as Guangdong Guanyinshan National Forest Park, Wutongshan National Forest Park and remaining forests as far as Chiliangshan.

Based upon this initial survey and comparing with data for Kadoorie Institute and Kadoorie Farm & Botanic Garden (Kendrick, 2002(2003)), it is very likely a more thorough moth survey undertaken on a monthly basis over several years would increase the species richness at Fung Yuen to in excess of 1,000 species. Further uncollated records are known to exist (e.g. there are an additional fifty or so unidentified specimens in the part of the J.J. Young collection not housed at KFBG (J.J. Young, pers. com.), as well as four undated records for *Lyssa zampa* Butler, 1869).

Species seen were a mix of habitat specialists and generalists, most singletons recorded were not habitat associates except for forest species (Geometridae, subfamilies Geometrinae and Ennominae) at the Butterfly Reserve, and riparian species in the subfamily Acentropinae, such as *Paracymoriza vagalis* (Walker, 1866) (Figure 7), whose larvae are aquatic, at Ko Kaa Garden in the SSSI.

Figure 7. *Paracymoriza vagalis* (Crambidae, Acentropinae) – a chink-mark moth, whose larvae are aquatic and require unpolluted water to survive



As yet, it is not possible to draw many conclusions about species assemblages due to insufficient recording effort, but some generalist species were present. Six of the seven species found at all the sub-sites recorded in the 2009 survey (Kendrick,

2010) – *Hydriris ornatalis* (Duponchel, 1832), *Cretonotos transiens* (Walker, 1855), *Laspeyria ruficeps* (Walker, 1864), *Ugia purpurea* Galsworthy, 1997, *Eublemma ragusana* (Freyer, 1845) and *Nodaria externalis* Guenée, 1854 occur throughout Hong Kong in many different habitats; the last of these is a detritivore in the larval stages. The seventh species found throughout Fung Yuen is *Parapoynx diminutalis* Snellen, 1880, a stream associated species with aquatic larvae, which is known to wander some distance from streams. There were also some specialist or habitat associated species recorded. The presence of six species of Acentropinae, which have stream dwelling larvae, indicates low pollution levels in the water (Speidel & Mey, 1999) and the presence of 14 species of Lithosiini (Arctiinae), is high by Hong Kong's standards, indicating a low level of local SO₂ pollution, as this group of moths have larvae that feed on lichens (e.g. Scoble, 1992), which are susceptible to SO₂ pollution (e.g. Hawksworth & Rose, 1976, Blett et al., 2003; Fenn et al., 2007).

The low Geometridae : Noctuidae (including quadrifine noctuid taxa) ratio observed by the KFBG surveys in 2009 (Kendrick, 2010) (58 geometrid species to 159 noctuid species, i.e. a ratio of 1:2.75) is indicative of high human disturbance (Kitching, et al. 2000), with relatively few true forest species recorded. When compared to KFBG (231 geometrid species to 567 noctuid species, 1:2.45), there is a lower proportion of Geometridae recorded at Fung Yuen. However, there were very few open habitat species recorded, such as Noctuinae (e.g. genera *Mythimna*, *Sasunaga*, *Agrotis*) and Plusiinae, species which are common in open habitats (grassland, agriculture, abandoned agriculture) in Hong Kong, indicating the overall moth fauna composition at Fung Yuen comprises forest and orchard species rather than open habitat species, with a significant number of generalists.

If the aim of managing the site is to maintain or increase the biodiversity of the Lepidoptera fauna at Fung Yuen, then managing the site in favour of lowland forest and orchard habitats, retaining the streams, would be likely to sustain the existing level of moth and butterfly diversity. Obtaining a more complete temporal picture of the moth community variation throughout at least a one-year study period would greatly enhance the existing level of understanding about the moth diversity at Fung Yuen and how to maintain this rich diversity.

CONCLUSIONS

Of the species recorded, 18 are of conservation concern and should be listed as IUCN "Data Deficient", noting that of these 18 species, five potentially meet IUCN Red List criteria for threatened species in one of the three main categories "Critically Endangered" (two species), "Endangered" (two species) and "Vulnerable" (one species) and a further 13 species potentially meet "Near Threatened" criteria. Twelve of the species recorded are currently only known from Hong Kong, all are potentially within one of the four IUCN threatened or near threatened categories listed. Seven species are recorded from Hong Kong

for the first time, and a further 6 species await confirmation of being new records to Hong Kong.

Several groups of moths (Acentropinae and Lithosiini), which were seen in good numbers by Hong Kong standards, are indicative of low levels of stream pollution and SO₂ pollution respectively.

Although based upon just light trap two surveys and a small amount of opportunistic diurnal recording, it is likely that the moth species richness at Fung Yuen will prove to be one of the highest in Hong Kong, mirroring the butterfly species richness for which the site is already renowned. The number of new records to Hong Kong and the number of species meeting IUCN Red List criteria for threatened species from just such a small amount of recording effort suggests that the site is possibly of international conservation significance for moths.

The moth assemblages recorded are typical of human disturbed forest, feng shui woods and orchards, with a relatively low Geometridae component, but includes only a small number of low-conservation interest species normally associated with agriculture and open habitats that were found in the SSSI.

ACKNOWLEDGEMENTS

Cordial thanks are extended to Tai Po Environmental Association for their invitation to KFBG initiating this study, and for their logistic support provided during both surveys in 2009. Many thanks too to the contributors to the Hong Kong Wildlife Net and contributors to the Hong Kong Moths Flickr Group for sharing their photographs and thereby providing vital information on the moth species at Fung Yuen. Special thanks to James Young and the late Kent Li for providing information on material recorded at Fung Yuen in the 1980s and 1990s. The Agriculture, Fisheries & Conservation Department of the Government of the Hong Kong Special Administrative Region granted permission to record moths and for the collection of voucher specimens. I also express my thanks to Professors Wang Min and Li Hou Hun who allowed access to collections in their care at the South China Agriculture University and University of Tianjin, China, and to Axel Kallies, The Walter and Eliza Hall Institute, Parkville, Victoria, Australia, for identifying specimens of, and providing literature on the Sesiidae. Lastly, I would like to thank the editors and external reviewers, as well as Dr. Gary Ades and Dr. Michael Lau at KFBG for providing suggestions and critique that significantly improved the content of the text.

REFERENCES

- Arita, Y. & Gorbunov, O., 1995. A review of the genus *Macrotarsipus* Hampson, [1893] (Lepidoptera, Sesiidae) of the Oriental region. - *Transactions of the Lepidopterological Society of Japan* 46(2), 103-111.
- Blett, T., Geiser, L. & Porter, E., 2003. Air Pollution-Related Lichen Monitoring in National Parks, Forests, and Refuges:

- Guidelines for Studies Intended for Regulatory and management purposes. *U.S. Dept. of the Interior Technical Report* NPSD 2292. 25pp.
- Clarke, J.F.G., 1965. *Catalogue of the Type Specimens of Microlepidoptera in the British Museum (Natural History) described by Edward Meyrick Meyrick. Vol. 5: Timyridae - Scythridae*. London: British Museum, pp. 1-255.
- Fenn, M., Geiser, L., Bachman, R., Blubaugh, T.J. & Bytnerowicz, A., 2007. Atmospheric deposition inputs and effects on lichen chemistry and indicator species in the Columbia River Gorge, USA. *Environmental Pollution* 146: 77-91.
- Frank, K.D., 1988. Impact of outdoor lighting on moths: an assessment. *Journal of the Lepidopterists' Society* 42: 63-93.
- Fry, R. & Waring, P., 2001. A guide to moth traps and their use. *The Amateur Entomologist Series* 24. Amateur Entomologists' Society. U.K. 60 pages, 8 b/w plates, 21 figs.
- Hawksworth, D.L. & Rose, F., 1976. *Lichens as Pollution Monitors*. Edward Arnold Ltd. London, UK. 59pp.
- Holloway, J. D., 1998. The Moths of Borneo, Part 8; Families Castniidae, Callidulidae, Drepanidae and Uraniidae. *Malayan Nature Journal* 52: 1-155.
- Holloway, J. D., 2005. The Moths of Borneo: Family Noctuidae, subfamily Catocalinae. *Malayan Nature Journal* 58: 1-529.
- Holloway, J.D., 2008. The Moths of Borneo: family Noctuidae, subfamilies Rivulinae, Phytometrinae, Herminiinae, Hypeninae and Hypenodinae. *Malayan Nature Journal* 60: 1-268.
- Holloway, J.D., 2009. The Moths of Borneo. Family Noctuidae, subfamilies Pantheinae (part), Bagisarinae, Acontiinae, Aediinae, Eustrotiinae, Bryophilinae, Araeopteroninae, Aveniinae, Eublemminae and further miscellaneous genera. *Malayan Nature Journal* 62: 1-240.
- IUCN, 2001. *IUCN Red List Categories and Criteria: Version 3.1*. IUCN Species Survival Commission. IUCN, Gland, Switzerland and Cambridge, UK. ii + 30 pp.
- Kendrick, R.C., 2002 (2003). *Moths (Insecta: Lepidoptera) of Hong Kong*. Ph.D. thesis, The University of Hong Kong. xvi + 660 pp.
- Kendrick, R.C., 2004. Checklist of Hong Kong moths. In: *Hong Kong Fauna – A Checklist of Selected Taxa* (Ades, G.W.J. & Kendrick, R.C., eds.). Kadoorie Farm & Botanic Garden, Hong Kong: 12-51.
- Kendrick, R.C., 2007. The conservation assessment of moths in Hong Kong. In: *Proceedings of the First South East Asian Lepidoptera Conservation Symposium, Hong Kong 2006* (Kendrick, R.C., ed.). Kadoorie Farm & Botanic Garden, Hong Kong: 71-82.
- Kendrick, R.C., 2010. *Kadoorie Farm and Botanic Garden Publication Series: No 6. Fung Yuen SSSI & Butterfly Reserve Moth Survey 2009*. Kadoorie Farm & Botanic Garden, Tai Po, Hong Kong. 25 pp.
- Kitching, R.L., Orr, A.G., Thalib, L., Mitchell, H., Hopkins, M.S. & Graham, A.W., 2000. Moth assemblages as indicators of environmental quality in remnants of upland Australian rain forest. *Journal of Applied Ecology* 37: 284-297.
- Kononenko, V.S. & Pinratana, A., 2005. *Moths of Thailand Vol. 3. Noctuidae: an illustrated catalogue of the Noctuidae (Insecta, Lepidoptera) in Thailand: Part 1: Subfamilies Herminiinae, Rivulinae, Hypeninae, Catocalinae, Aganainae, Euteliinae, Stictopterinae, Plusiinae, Pantheinae, Achronictinae and Agaristinae*. Brothers of St Gabriel in Thailand. Bangkok. 260 pp.
- Lafontaine, J.D. & Schmidt, B.C., 2010. Annotated check list of the Noctuoidea (Insecta, Lepidoptera) of North America north of Mexico. *ZooKeys* 40: 1-239. doi: 10.3897/zookeys.40.414
- Li, H.H., Zhen, H., Kendrick, R.C. & Sterling, M.J., 2010. Microlepidoptera of Hong Kong: Taxonomic study on the genus *Dichomeris* Hübner, 1818, with description of three new species (Lepidoptera: Gelechiidae). *SHILAP Revista de Lepidopterologia* 38: 67-89 pp.
- Nowinszky, L., 2004. Nocturnal illumination and night flying insects. *Applied Ecology & Environmental Research* 2: 17-52.
- Pühringer, F. & Kallies, A., 2004. Provisional checklist of the Sesiidae of the world (Lepidoptera: Ditrysia). - *Mitteilungen der Entomologischen Arbeitsgemeinschaft Salzkammergut* 4: 1-85; updated by F. Pühringer 1 September 2010 at <http://members.mywave.at/m204259aa/Checklst.htm>, accessed on 14 September 2010.
- Robinson, G.S., Kevin R Tuck, K.R. & M Shaffer, M., 1994. *A field guide to the smaller moths of South-East Asia*. Natural History Museum (London, England) & Malayan Nature Society, Kuala Lumpur, Malaysia. 309 pp, 32 col plates, 51 figs, 2 maps.
- Scoble, M.J., 1992. *The Lepidoptera: Form, Function & Diversity*. Oxford University Press / The Natural History Museum, London. xi + 404 pp.
- Speidel, W. & Mey, W., 1999. Catalogue of the Oriental Acentropinae (Lepidoptera: Crambidae). *Tijdschrift voor*

Entomologie 142: 125-142.

Tai Po Environmental Association, 2004. *Brief History of Fung Yuen*. Website, accessed 25 May 2010 from <http://www.fungyuen.org/%5Epage=heritage&lang=eng/default.htm.htm>.

Wang, S.X. & Kendrick, R.C., 2009. The genus *Stereodytis* Meyrick (Lepidoptera: Oecophoridae) from China, with descriptions of two new species. *Entomologica Fennica* 20: 186-190.

Wang, S.X., Kendrick, R.C. & Sterling, P., 2009. Microlepidoptera of Hong Kong: Oecophoridae I: the genus *Promalactis* Meyrick. *Zootaxa* 2239: 31-44.

Yau., W.K., Li, S.W. & Wong, L.H., 2007. Collaboration among government, green groups and villagers: a key component contributing to the real success of Fung Yuen Butterfly Conservation Project [abstract & presentation notes]. In: Kendrick, R.C. (ed.), *Proceedings of the First South East Asian Lepidoptera Conservation Symposium, Hong Kong 2006*. Kadoorie Farm & Botanic Garden, Hong Kong: 111-116.

Zaspel, J.M., Kononenko, V.S. & Goldstein, P. Z., 2007. Another Blood Feeder? Experimental Feeding of a Fruit-Piercing Moth Species on Human Blood in the Primorye Territory of Far Eastern Russia (Lepidoptera: Noctuidae: Calpinae). *Journal of Insect Behavior* 20: 437-451.

Appendix 1. List of moths recorded at Fung Yuen SSSI & Butterfly Reserve**KEY**

HK – endemic to Hong Kong
pCR / pEN / pVU / pNT – IUCN Data Deficient, meets IUCN endangered species red list criteria based upon available information and **provisionally** assigned Critically Endangered / Endangered / Vulnerable / Near Threatened
intr – non-native, accidental introduction

vr – very rare r – rare s – scarce
u – uncommon f – frequent c – common
vc – very common rd – restricted l – local
w – widespread dd – data deficient
NR – new record for Hong Kong

Family - subfamily

Species number	<i>species</i> [c.f. Kendrick (2010)]	Species Author(s)	HK Status & Distribution	Total Count	Date(s) recorded
Nepticulidae - Nepticulinae					
1	1	Nepticulidae sp. indet. #1	vr, rd NR	1	24 Apr 2009
Tineidae - Hapsiferinae					
2	2	<i>Dasyses</i> sp. nr. <i>correpta</i>	pNT s, l	2	24 Apr 2009
Tineidae - Perissomasticinae					
3	3	<i>Edosa</i> sp. B	pNT u, l	1	16 Oct 2009
4	4	<i>Edosa</i> sp. C	pNT u, w	2	16 Oct 2009
Psychidae - unplaced to subfamily					
5	5	Psychidae sp. indet. #1	dd	1	24 Apr 2009
Gracillariidae - Gracillariinae					
6	6	<i>Caloptilia</i> sp. nr. <i>protiella</i>	r, rd	1	24 Apr 2009
7	7	<i>Epicephala albifrons</i> (Stainton, 1859)	f, w	1	24 Apr 2009
8	8	<i>Epicephala</i> sp. A (albifrons group)	dd (r, rd)	1	24 Apr 2009
Plutellidae - Plutellinae					
9	9	<i>Plutella xylostella</i> (Linnaeus, 1758)	c, w	5	24 Apr 2009, 16 Oct 2009
Yponomeutidae - unplaced to subfamily					
10	10	Yponomeutidae genus & sp. B	sc, l	2	24 Apr 2009
Gelechiidae - Dichomeridinae					
11	11	<i>Dichomeris microsphena</i> (Meyrick, 1921)	s, w	1	16 Oct 2009
12	12	<i>Dichomeris moriutii</i> Pomonarenko & Ueda, 2004	u, w	1	16 Oct 2009
13	13	<i>Dichomeris orientis</i> Park & Hodges, 1995	s, l	1	24 Apr 2009
14	14	<i>Helcystogramma triannulella</i> (Herrich-Shäffer, 1854)	s, w	2	16 Oct 2009
15	15	<i>Helcystogramma</i> sp. A	vr, rd NR	1	16 Oct 2009
Gelechiidae - Chelariinae					
16	16	<i>Anarsia patulella</i> (Walker, 1864)	u, l	3	24 Apr 2009
17	17	<i>Anarsia phortica</i> Meyrick, 1913	r, rd	1	24 Apr 2009
18	18	<i>Anarsia</i> sp. A	dd (r, rd)	1	16 Oct 2009
19	19	<i>Anarsia</i> sp. nr. <i>isogona</i> Meyrick, 1913	f, l	2	16 Oct 2009
20	20	<i>Faristenia</i> sp. 1	vr, rd NR	1	16 Oct 2009
21	21	<i>Hypatima arignota</i> (Meyrick, 1916)	f, l	1	24 Apr 2009
22	22	<i>Mesophleps albilinella</i> (Park, 1990)	s, l	1	24 Apr 2009
23	23	<i>Mesophleps palpigera</i> (Walsingham, 1891)	r, rd	1	24 Apr 2009

Autostichidae - Autostichinae					
24	24	<i>Autosticha calceata</i> Meyrick, 1908	c, w	1	16 Oct 2009
Lecithoceridae - Lecithocerinae					
25	25	<i>Frisilia</i> sp. 1	vr, rd NR	1	24 Apr 2009
26	26	<i>Frisilia</i> sp. 2	vr, rd NR	1	24 Apr 2009
27	27	<i>Homaloxestis myloxesta</i> Meyrick, 1932	c, w	1	24 Apr 2009
Oecophoridae - Oecophorinae					
28	28	<i>Promalactis biovata</i> Wang, Kendrick & Sterling, 2009			
			pNT HK ; f, w	1	24 Apr 2009
29	29	<i>Promalactis semantris</i> (Meyrick, 1906)	s, w	2	24 Apr 2009, 16 Oct 2009
30	30	<i>Stereodytis acutidens</i> Wang & Kendrick, 2009			
			pEN HK ; u, l	1	24 Apr 2009
31	31	<i>Stereodytis brevignatha</i> Wang & Kendrick, 2009			
			pCR HK ; r, rd	2	24 Apr 2009
Oecophoridae - Stathmopodinae					
32	32	<i>Stathmopoda</i> sp. G	dd	1	24 Apr 2009, 16 Oct 2009
33	33	<i>Stathmopoda stimulata</i> Meyrick, 1913	c, w	1	24 Apr 2009
Coleophoridae - Blastobasinae					
34	34	<i>Blastobasis</i> sp. A	c, w	1	24 Apr 2009
Elachistidae - Aeolanthinae					
35	35	<i>Aeolanthes</i> sp. nr. <i>erebomicta</i>	pNT r, l	2	24 Apr 2009
Cosmopterigidae - Chrysopeleinae					
36	36	<i>Ascalenia</i> sp. nr. <i>thoracista</i> (Meyrick, 1915)	c, w	38	24 Apr 2009
Cosmopterigidae - Cosmopteriginae					
37	37	<i>Labdia oxychlora</i> Meyrick, 1932	u, w	1	24 Apr 2009
38	38	<i>Labdia semicoccinea</i> Stainton, 1859	r, rd	2	24 Apr 2009
39	39	Cosmopterigidae sp. indet. #1	vr, rd	1	24 Apr 2009
Tortricidae - Tortricinae					
40	40	<i>Adoxophyes privatana</i> (Walker, 1863)	c, w	9	24 Apr 2009
41	41	<i>Homona coffearia</i> (Neitner, 1861)	c, w	8	24 Apr 2009
42	42	<i>Homona eductana</i> (Walker, 1863)	c, w	1	24 Apr 2009
43	43	<i>Meridemis furtiva</i> Diakonoff, 1976	c, w	2	16 Oct 2009
Tortricidae - Olethreutinae					
44	44	<i>Arcesis threnodes</i> (Meyrick, 1905)	s, l	3	24 Apr 2009
45	45	<i>Bactra venosana</i> (Zeller, 1847)	dd (r, rd)	2	24 Apr 2009
46	46	<i>Cryptophlebia ombrodelta</i> (Lower, 1898)	c, w	1	24 Apr 2009
47	47	<i>Cryptophlebia repletana</i> (Walker, 1863)	c, w	2	16 Oct 2009
48	48	<i>Cryptophlebia</i> sp. A	r, rd	1	16 Oct 2009
49	49	<i>Dudua aprobola</i> (Meyrick, 1886)	c, w	2	24 Apr 2009
50	50	<i>Gatesclarkeana idia</i> Diakonoff, 1973	s, w	3	24 Apr 2009
51	51	<i>Lobesia aeolopa</i> Meyrick, 1907	c, w	1	24 Apr 2009
52	52	<i>Lobesia</i> sp. B nr. <i>pyriformis</i>	dd (r, rd)	1	24 Apr 2009
53	53	<i>Loboschiza koenigiana</i> (Fabricius, 1775)	f, w	1	24 Apr 2009, 16 Oct 2009
54	54	<i>Fibuloides</i> sp. indet. #1	dd	1	24 Apr 2009
55		<i>Pseudacroclita hapalaspis</i> (Meyrick, 1931)	c, w	~ 20 (larvae)	6 Sep 2008
56	55	<i>Ophiorrhabda cellifera</i> (Meyrick, 1912)	s, w	1	24 Apr 2009
57	56	<i>Ophiorrhabda mormopa</i> (Meyrick, 1906)	u, l	3	16 Oct 2009
58	57	<i>Rhopobota naevana</i> (Hübner, [1814-1817])	dd (r, rd)	1	24 Apr 2009
59	58	<i>Rhopobota</i> sp. B	dd (u, l)	1	24 Apr 2009
60	59	<i>Rhopobota</i> sp. C	dd (u, l)	1	24 Apr 2009
61	60	<i>Sorolopha archimedias</i> (Meyrick, 1912)	f, w	1	24 Apr 2009
62	61	<i>Sorolopha</i> sp. B	r, rd	1	24 Apr 2009

63	62	<i>Statherotis discana</i> (Felder & Rogenhofer, 1875)				
			c, w	1		24 Apr 2009
Sesiidae - Sesiinae						
64		<i>Ichneumonella</i> sp. A		r, rd NR	2	10 May 2006, 15 Apr 2007
65		<i>Macrotarsipus</i> sp. A		pVU vr, rd NR	2	10 May 2006
Choreutidae - Choreutinae						
66	63	<i>Choreutis fulminea</i> Meyrick, 1912		s, l	1	16 Oct 2009
67		<i>Brenthia</i> sp. A		u, l	2	29 Apr 2009, 5 May 2009
Zygaenidae - Procridinae						
68		<i>Artona hainana</i> Butler, 1876		s, w	1	2 Oct 2006
Zygaenidae Chalcosiinae						
69	64	<i>Eterusia aedea</i> (Clerck, 1759)		c, w	2	24 Apr 2009
Limacodidae - unplaced to subfamily						
70	65	<i>Phlossa conjuncta</i> (Walker, [1855])		f, w	1	24 Apr 2009
Cossidae - Cossinae						
71	66	<i>Phragmataecia fusca</i> Wileman, 1911		s, w	1	24 Apr 2009
Pterophoridae - Pterophorinae						
72	67	<i>Stenoptilodes taprobanes</i> (Felder & Rogenhofer, 1875)		r, rd	1	16 Oct 2009
Thyrididae - Thyridinae						
73		<i>Glanycus insolitus</i> Walker, 1855		u, w	1	4 Jul 1996
Pyralidae - Galleriinae						
74	68	<i>Doloessa viridis</i> Zeller, 1848		c, w	2	24 Apr 2009
75	69	<i>Tirathaba irrufatella</i> Ragonot, 1901		s, l	2	24 Apr 2009
Pyralidae - Pyralinae						
76	70	<i>Endotricha repandalis</i> (Fabricius, 1794)		c, w	9	24 Apr 2009, 16 Oct 2009
77	71	<i>Endotricha theonalis</i> (Walker, 1859)		f, w	1	24 Apr 2009
Pyralidae - Phycitinae						
78	72	<i>Assara</i> sp. B		vr, rd NR	1	16 Oct 2009
79	73	<i>Ectomyelois ceratoniae</i> (Zeller, 1839)		c, w	2	24 Apr 2009
80	74	<i>Emmalocera neesimella</i> (Ragonot, 1901)		u, w	2	24 Apr 2009, 16 Oct 2009
81	75	<i>Etiella zinckenella</i> (Treitschke, 1832)		f, w	2	16 Oct 2009
82	76	<i>Guastica semilutea</i> Walker, 1863		c, w	2	24 Apr 2009
83	77	<i>Indomyrtaea ferretincta</i> (Hampson, 1912)		s, l	2	16 Oct 2009
84	78	<i>Morosaphycita morosalis</i> (Sallmüller, 1880)		u, l	2	24 Apr 2009, 16 Oct 2009
85	79	<i>Phycita cavifrons</i> Meyrick, 1932		r, rd	1	24 Apr 2009
Crambidae - Pyraustinae						
86	80	<i>Hyalobathra opheltesalis</i> (Walker, 1859)		u, l	1	24 Apr 2009
87	81	<i>Isocentris filalis</i> (Guenée, 1854)		c, w	1	16 Oct 2009
Crambidae - Acentropinae						
88	82	<i>Agassziella</i> sp. nr. <i>albidivisa</i> (Warren, 1896)		r, rd	1	16 Oct 2009
89	83	<i>Eoophyla</i> sp. A nr. <i>sinensis</i>		u, l	5	16 Oct 2009
90	84	<i>Eristena</i> sp. nr. <i>bifurcalis</i> (Pryer, 1877)		r, rd	1	16 Oct 2009
91	85	<i>Paracymoriza vagalis</i> (Walker, [1866])		s, l	1	16 Oct 2009
92	86	<i>Parapoynx diminutalis</i> Snellen, 1880		u, w	32	24 Apr 2009, 16 Oct 2009
93	87	<i>Parapoynx fluctuosalis</i> (Zeller, 1852)		s, l	3	24 Apr 2009
Crambidae - Crambinae						
94	88	<i>Calamotropha</i> sp. nr. <i>melanosticta</i> (Hampson, 1895)		r, rd	1	24 Apr 2009

95	89	<i>Chilo auricilia</i> Dudgeon, 1905	r, rd	1	16 Oct 2009
96	90	<i>Culladia hastiferalis</i> (Walker, 1865)	c, w	7	24 Apr 2009
Crambidae - Schoenobiinae					
97	91	<i>Scirpophaga praelata</i> (Scopoli, 1763)	u, l	1	24 Apr 2009
Crambidae - Spilomelinae					
98	92	<i>Aethaloessa calidalis</i> (Guenée, 1854)	s, l	2	24 Apr 2009
99	93	<i>Antigastra catalaunalis</i> (Duponchel, 1833)	r, rd	1	16 Oct 2009
100	94	<i>Camptomastix hisbonalis</i> (Walker, 1859)	c, w	3	24 Apr 2009
101	95	<i>Cnaphalocrocis medinalis</i> (Guenée, 1854)	c, w	2	16 Oct 2009
102	96	<i>Cnaphalocrocis poeyalis</i> (Boisduval, 1833)	c, w	1	16 Oct 2009
103		<i>Diaphania indica</i> (Saunders, 1851)	c, w	1	Oct 2006
104		<i>Diasemia accalis</i> (Walker, 1859)	f, w	1	23 Aug 2007
105	97	<i>Diasemiopsis ramburialis</i> (Duponchel, 1834)	s, rd	1	24 Apr 2009
106		<i>Dichocrocis punctiferalis</i> (Guenée, 1854)	f, w	1	22 May 1993
107	98	<i>Eurhyarodes bracteolalis</i> (Zeller, 1852)	s, l	1	16 Oct 2009
108	99	<i>Eurhyarodes tricoloralis</i> (Zeller, 1852)	s, l	1	16 Oct 2009
109	100	<i>Filodes fulvidorsalis</i> (Hübner, 1832)	c, w	8	24 Apr 2009
110	101	<i>Glyphodes bicolor</i> (Swainson, [1821])	c, w	1	16 Oct 2009
111	102	<i>Herpetogramma licarsisalis</i> (Walker, 1859)	c, w	4	24 Apr 2009, 16 Oct 2009
112	103	<i>Hydriris ornatalis</i> (Duponchel, 1832)	c, w	7	Oct 2006, 24 Apr 2009, 16 Oct 2009
113	104	<i>Hymenia perspectalis</i> (Hübner, 1796)	u, w	1	24 Apr 2009
114	105	<i>Ischnurges gratiosalis</i> (Walker, 1859)	f, w	1	16 Oct 2009
115	106	<i>Lamprosema tampusalis</i> (Walker, 1859)	c, w	4	24 Apr 2009
116	107	<i>Metoeca foedalis</i> (Guenée, 1854)	c, w	1	16 Oct 2009
117	108	<i>Omiodes diemenalis</i> (Guenée, 1854)	u, w	5	24 Apr 2009, 16 Oct 2009
118	109	<i>Palpita pajnii</i> Kirti & Rose, 1992	s, l	1	16 Oct 2009
119	110	<i>Pleuroptya</i> sp. A	r, rd	1	16 Oct 2009
120	111	<i>Prophantis adusta</i> Inoue, 1986	f, w	1	24 Apr 2009
121	112	<i>Psara basalis</i> (Walker, 1865)	u, w	2	16 Oct 2009
122	113	<i>Sameodes cancellalis</i> (Zeller, 1852)	f, w	1	16 Oct 2009
123	114	<i>Spoladea recurvalis</i> (Fabricius, 1775)	c, w	9	24 Apr 2009, 16 Oct 2009
124	115	<i>Syllepte pernitescens</i> (Swinhoe, 1894)	c, w	1	24 Apr 2009
125	116	<i>Symmoracma minoralis</i> (Snellen, 1880)	u, l	9	24 Apr 2009, 16 Oct 2009
126	117	<i>Talanga sexpunctalis</i> (Walker, 1874)	c, w	1	16 Oct 2009
Uraniidae - Uraniinae					
127	118	<i>Lyssa zampa</i> Butler, 1869	c, w	1	16 Oct 2009
Uraniidae - Microniinae					
128		<i>Micronia aculeata</i> Guenée, 1857	f, w	1	1 Sep 2008
Uraniidae - Epipleminae					
129		<i>Orudiza protheclaria</i> Walker, 1861	s, l	4	9 May 1989, 30 Jul 19889 11 Oct 1989, 15 May 2010
Geometridae - Ennominae					
130	119	<i>Ascotis selenaria</i> ([Denis & Schiffermüller], 1775)	c, w	1	24 Apr 2009
131	120	<i>Chiasmia emersaria</i> (Walker, 1861)	c, w	1	16 Oct 2009
132	121	<i>Chiasmia monticolaria</i> (Leech, 1897)	f, l	1	24 Apr 2009
133	122	<i>Chiasmia triangulata</i> (Hampson, 1891)	s, l	1	16 Oct 2009
134	123	<i>Coremecis</i> sp. A	s, l	2	24 Apr 2009
135	124	<i>Corymica arnearia</i> Walker, 1860	f, w	2	25 Nov 1989, 24 Apr 2009
136	125	<i>Dasyboarmia subpilosa</i> (Warren, 1894)	vc, w	4	24 Apr 2009
137	126	<i>Ectropis bhurmitra</i> (Walker, 1860)	c, w	4	24 Apr 2009
138	127	<i>Fascellina chromataria</i> Walker, 1860	vc, w	3	24 Apr 2009
139	128	<i>Fascellina plagiata</i> (Walker, 1866)	c, w	1	24 Apr 2009
140	129	<i>Hypomecis cineracea</i> (Moore, 1888)	f, l	4	24 Apr 2009, 16 Oct 2009

141	130	<i>Hyposidra infixaria</i> (Walker, 1860)	vc, w	1	24 Apr 2009
142	131	<i>Hyposidra talaca</i> (Walker, 1860)	vc, w	1	24 Apr 2009
143	132	<i>Lomographa inamata</i> (Walker, 1861)	c, l	1	16 Oct 2009
144	133	<i>Luxiaria phyllosaria</i> (Walker, 1860)	f, w	2	24 Apr 2009, 27 Mar 2010
145	134	<i>Macaria abydata</i> Guenée, 1857	Intr.; u, w	1	24 Apr 2009
146	135	<i>Obeidia tigrata</i> (Guenée, 1858)	c, w	1	24 Apr 2009
147	136	<i>Ophthalmitis herbidaria</i> (Guenée, 1858)	c, w	1	24 Apr 2009
148	137	<i>Ourapteryx clara</i> Butler, 1880	c, w	2	24 Apr 2009
149	138	<i>Pareumelea eugeniata</i> (Guenée, 1857)	c, w	1	24 Apr 2009
150	139	<i>Peratophyga venetia</i> Swinhoe, 1902	c, w	1	16 Oct 2009
151		<i>Percnia fumidaria</i> Leech, 1897	c, w	2	24 Aug 2007, 3 Feb 2010
152	140	<i>Plesiomorpha flaviceps</i> (Butler, 1881)	c, w	1	24 Apr 2009
153	141	<i>Plutodes costatus</i> (Butler, 1866)	vc, w	7	24 Apr 2009
154	142	<i>Pseudonadagara semicolor</i> (Warren, 1895)	c, w	1	24 Apr 2009
155	143	<i>Psilalcis galsworthyi</i> Sato, 1996	pNT vc, w	1	24 Apr 2009
156	144	<i>Rutellerona pseudocessaria</i> Holloway, 1993 [1994]			
			c, w	3	24 Apr 2009
157	145	<i>Scardamia auranticaria</i> Bremer, 1864	u, l	1	16 Oct 2009
158	146	<i>Scardamia metallaria</i> Guenée, 1858	u, w	2	16 Oct 2009
159	147	<i>Serratophyga xanthospilaria</i> (Wehrli, 1925)	c, w	1	24 Apr 2009
160	148	<i>Zanclopera falcata</i> Warren, 1894	c, w	1	24 Apr 2009

Geometridae - Geometrinae

161	149	<i>Comibaena argentataria</i> (Leech, 1897)	r, l	3	24 Apr 2009
162	150	<i>Comibaena cassidara</i> (Guenée, 1857 [1858])	u, l	1	24 Apr 2009
163	151	<i>Hemithea marina</i> (Butler, 1878)	c, w	1	24 Apr 2009
164	152	<i>Hemithea tritonaria</i> (Walker, [1863])	c, w	3	24 Apr 2009
165	153	<i>Lophophelma calaurops</i> (Prout, 1912)	vc, w	1	16 Oct 2009
166	154	<i>Pelagodes antiquadraria</i> (Inoue, 1976)	c, w	3	24 Apr 2009
167	155	<i>Pingasa ruginaria</i> (Guenée, 1857 [1858])	c, w	1	16 Oct 2009
168	156	<i>Thalassodes immissaria</i> Walker, 1861	c, w	1	16 Oct 2009

Geometridae - Larentiinae

169	157	<i>Bosara subrobusta</i> (Inoue, 1988)	u, w	3	24 Apr 2009
170	158	<i>Collix ghosha</i> Walker, 1862	f, rd	1	24 Apr 2009
171	159	<i>Pseudeuchlora kafebera</i> (Swinhoe, 1894)	c, w	1	16 Oct 2009
172	160	<i>Sigilliclystis kendricki</i> Galsworthy, 1999	pNT HK; c, w	1	16 Oct 2009
173	161	<i>Spiralisigna subpumilata</i> (Inoue, 1972)	f, w	2	24 Apr 2009

Geometridae - Sterrhinae

174	162	<i>Idaea chotaria</i> Swinhoe, 1886	r, rd	1	24 Apr 2009
175	163	<i>Idaea costiguttata</i> (Warren, 1896)	c, w	3	24 Apr 2009, 16 Oct 2009
176	164	<i>Idaea impexa</i> (Butler, 1879)	c, w	2	24 Apr 2009
177	165	<i>Idaea jakima</i> (Butler, 1878)	f, w	1	16 Oct 2009
178	166	<i>Idaea macrospila</i> (Prout, 1926)	c, w	1	24 Apr 2009
179	167	<i>Idaea phaeocrossa</i> (Prout, 1932)	f, w	1	16 Oct 2009
180	168	<i>Idaea ptyonopoda</i> (Hampson, 1895)	c, w	4	24 Apr 2009
181	169	<i>Idaea vacillata</i> (Walker, 1862)	c, w	2	24 Apr 2009, 16 Oct 2009
182	170	<i>Lophophleps triangularis</i> (Hampson, 1895)	c, w	2	24 Apr 2009, 16 Oct 2009
183	171	<i>Organopoda carnearia</i> (Walker, 1861)	f, l	1	16 Oct 2009
184	172	<i>Perixera griseata</i> (Warren, 1896)	f, l	2	24 Apr 2009
185	173	<i>Perixera punctata</i> (Warren, 1897)	s, l	1	16 Oct 2009
186	174	<i>Problepsis eucircota</i> Prout, 1913	r, rd	1	16 Oct 2009
187	175	<i>Scopula</i> sp. C	pNT HK; c, w	2	16 Oct 2009
188	176	<i>Somatina plynusaria</i> (Walker, 1862)	f, w	1	16 Oct 2009

Lasiocampidae - Lasiocampinae

189	177	<i>Euthrix isocyma</i> (Hampson, 1892)	vc, w	3	24 Apr 2009, 16 Oct 2009
190		<i>Metanastris gemella</i> de Lajonquière, 1979	u, w	1	16 Sep 2007
191		<i>Trabala vishnou</i> (Lefebvre, 1827)	u, w	1 (larva)	29 Apr 2009

Sphingidae - Smerinthinae					
192	178	<i>Marumba dyras</i> (Walker, 1856)	vc, w	2	24 Apr 2009
Sphingidae - Sphinginae					
193		<i>Acherontia lachesis</i> (Fabricius, 1798)	f, w	3(larvae)	23 Feb 2007, 5 Jun 2008 30 Aug 2009
Sphingidae - Macroglossinae					
194		<i>Cephonodes hylas</i> (Linnaeus, 1771)	u, w	2	5 Jun 2008, 7 Oct 2008
195	179	<i>Enpinanga assamensis</i> (Walker, 1856)	f, w	1	24 Apr 2009
196	180	<i>Macroglossum fritzei</i> Rothschild & Jordan, 1903	vc, w	2	13 Sep 2007, 24 Apr 2009
197	181	<i>Macroglossum heliophila</i> Boisduval, [1875]	c, w	3	13 Sep 2007, 11 Aug 2008 24 Apr 2009
198	182	<i>Macroglossum insipida</i> Butler, 1875	s, l	1	16 Oct 2009
199	183	<i>Macroglossum pyrrhosticta</i> Butler, 1875	f, w	2	16 Oct 2009
200	184	<i>Theretra latreillii</i> Macleay, 1826	f, w	2	24 Apr 2009
Saturniidae - Saturniinae					
201		<i>Attacus atlas</i> Linnaeus, 1758	u, w	3 (larvae)	7 Aug 2009, 15 Aug 2009 30 Aug 2009
202		<i>Saturnia pyretorum</i> (Westwood, [1847])	f, w	1 (larva)	12 May 2008
Eupterotidae - Eupterotinae					
203	185	<i>Apha</i> sp. A (<i>floralis</i> group)	pNT HK; c, w	2	24 Apr 2009
Bombycidae - Bombycinae					
204	186	<i>Ocinara albicollis</i> (Walker, 1862)	f, w	1	16 Oct 2009
Bombycidae - Prismostictinae					
205	187	<i>Prismosticta hyalinata</i> Butler, 1885	u, w	5	16 Oct 2009
Notodontidae - Dudusinae					
206	188	<i>Netria viridescens</i> Walker, 1855	c, w	1	24 Apr 2009
Notodontidae - Biretinae					
207	189	<i>Gargetta divisa</i> Gaede, 1930	c, w	2	24 Apr 2009
208	190	<i>Porsica curvaria</i> (Hampson, 1892)	u, l	1	16 Oct 2009
Notodontidae - Stauropinae					
209	191	<i>Antiphalera exquisitor</i> Schintlmeister, 1989	c, w	1	16 Oct 2009
Notodontidae - Pygaerinae					
210	192	<i>Micromelalopha baibarana</i> Matsumura, 1929	c, w	1	24 Apr 2009
Micronoctuidae - Belluliinae					
211	193	<i>Bellulia galsworthyi</i> Fibiger, 2008	pNT HK; s, w	1	24 Apr 2009
Erebidae - Lymantriinae					
212	330	<i>Arna bipunctapex</i> (Hampson, 1891)	f, w	1	16 Oct 2009
213	331	<i>Artaxa</i> sp. C nr. <i>guttata</i> Walker	s, l	1	24 Apr 2009
214	332	<i>Artaxa</i> sp. nr. <i>lubecula</i> Wileman, 1910	f, w	7	24 Apr 2009
215	333	<i>Calliteara angulata</i> (Hampson, 1891)	u, l	1	16 Oct 2009
216	334	<i>Euproctis</i> sp. nr. <i>seitzei</i> Strand	u, w	3	24 Apr 2009, 16 Oct 2009
217		<i>Olene chekiangensis</i> (Collonette, 1938)	c, w	1 (larva)	19 Jul 2009
218	335	<i>Orgyia postica</i> (Walker, 1855)	vc, w	5	24 Apr 2009, 16 Oct 2009
219	336	<i>Perina nuda</i> (Fabricius, 1787)	c, w	1 (pupa)	21 Mar 2007
				3	24 Apr 2009
Erebidae - Arctiinae					
220		<i>Amata germana</i> Felder, 1862	c, w	2	20 Mar 2007, 11 Mar 2009

221		<i>Syntomoides imaon</i> (Cramer, 1780)	c, w	4	16 Sep 1988, 23 Aug 2007 16 Aug 2008, 19 Mar 2010
222		<i>Argina argus</i> (Kollar, 1844)	s, w	1	16 Jun 2008
223	205	<i>Barsine striata</i> (Bremer & Grey, 1852)	vc, w	1	16 Oct 2009
224	206	<i>Brunia antica</i> (Walker, 1854)	vc, w	2	24 Apr 2009
225	207	<i>Cretonotos transiens</i> (Walker, 1855)	c, w	23	24 Apr 2009
226	208	<i>Diduga flavicostata</i> (Snellen, 1878)	c, w	1	24 Apr 2009
227	209	<i>Eilema fuscodorsalis</i> (Matsumura, 1930)	c, w	5	24 Apr 2009, 16 Oct 2009
228	210	<i>Eugoa brunnea</i> Hampson, 1914	f, l	3	24 Apr 2009, 16 Oct 2009
229	211	<i>Lyclene acteola</i> (Swinhoe, 1903)	u, l	3	24 Apr 2009
230	212	<i>Macrobrotis gigas</i> (Walker, 1854)	f, w	1	24 Apr 2009
231	213	<i>Microlithosia shaowuica</i> Daniel, 1954	f, l	4	24 Apr 2009, 16 Oct 2009
232	214	<i>Pelosia</i> sp. indet. A	r, rd	1	24 Apr 2009
233	215	<i>Schistophleps bipuncta</i> Hampson, 1891	vc, w	3	24 Apr 2009
233	216	<i>Tigrioides immaculata</i> (Butler, 1880)	c, w	3	24 Apr 2009

Erebidae - Herminiinae

235	307	<i>Adrapsa ablualis</i> Walker, [1859] 1858	c, w	1	16 Oct 2009
236	308	<i>Bertula abjudicalis</i> Walker, [1859] 1858	f, l	3	24 Apr 2009
237	309	<i>Hadennia jutalis</i> (Walker, [1859])	c, w	3	24 Apr 2009
238	310	Herminiinae genus & sp. A	r, rd	2	16 Oct 2009
239	311	<i>Hydrillodes abavalis</i> (Walker, [1859] 1858)	c, w	1	24 Apr 2009
240	312	<i>Hydrillodes lentalis</i> Guenée, 1854	c, w	1	24 Apr 2009
241	313	<i>Nodaria externalis</i> Guenée, 1854	c, w	9	24 Apr 2009, 16 Oct 2009
242	314	<i>Polypogon biasalis</i> (Walker, 1858)	f, w	3	16 Oct 2009
243	315	<i>Polypogon fractalis</i> (Guenée, 1854)	f, w	9	24 Apr 2009, 16 Oct 2009
244	316	<i>Progonia oileusalis</i> (Walker, 1858)	c, w	2	16 Oct 2009
245	317	<i>Simplicia bimarginata</i> Walker, [1863]	f, l	1	16 Oct 2009
246	318	<i>Simplicia niphona</i> (Butler, 1878)	c, w	1	24 Apr 2009

Erebidae - Aganainae

247	198	<i>Asota caricae</i> (Fabricius, 1775)	c, w	5	24 Apr 2009, 16 Oct 2009
248	199	<i>Asota heliconia</i> (Linnaeus, 1758)	c, w	3	24 Apr 2009, 16 Oct 2009
249	200	<i>Asota plaginota</i> Butler, 1875	c, w	1	16 Oct 2009

Erebidae - Pangraptinae

250	350	<i>Pangraptia plumbilineata</i> Wileman & West, 1929	c, w	2	24 Apr 2009
-----	-----	--	------	---	-------------

Erebidae - Hypeninae

251		<i>Dichromia sagitta</i> (Fabricius, 1775)	u, w	1	28 May 2010
252	319	<i>Hypena conscitalis</i> Walker, [1866] 1865	s, rd	1	16 Oct 2009
253	320	<i>Hypena indicatalis</i> Walker, [1859] 1858	f, w	1	16 Oct 2009
254	321	<i>Hypena jocosalis</i> Walker, [1859] 1858	s, rd	1	24 Apr 2009
255	322	<i>Hypena occatus</i> Hampson, 1882	f, w	1	24 Apr 2009
256	323	<i>Hypenagonia</i> sp. A	vr, rd NR	1	24 Apr 2009
257	324	<i>Lysimelia alstoni</i> Holloway, 1979	f, w	2	16 Oct 2009
258	325	<i>Lysimelia neleusalis</i> Walker, [1859] 1858	f, w	1	16 Oct 2009
259	326	<i>Naarda ochrestigma</i> (Hampson, 1893)	f, rd	4	24 Apr 2009
260	327	<i>Rhynchina columbaris</i> (Butler, 1889)	r, rd	1	24 Apr 2009

Erebidae - Rivulinae

261	351	<i>Rivula inconspicua</i> (Butler, 1881)	f, w	3	16 Oct 2009
262	352	<i>Rivula sasaphila</i> Sugi, 1982	u, l	2	24 Apr 2009

Erebidae - Scoliopteryginae

263	228	<i>Cosmophila flava</i> (Fabricius, 1775)	c, w	4	16 Oct 2009
264	233	<i>Gonitis mesogona</i> Walker, [1858] 1857	c, w	2	24 Apr 2009

Erebidae - Calpinae

265	226	<i>Anachrostis</i> sp. nr. <i>nigripuncta</i> Hampson, 1893f, w		5	24 Apr 2009, 16 Oct 2009
-----	-----	---	--	---	--------------------------

266	227	<i>Calyptra minuticornis</i> (Guenée, 1852)	f, w	3	24 Apr 2009, 16 Oct 2009
267	229	<i>Dierna patibulum</i> (Fabricius, 1794)	u, l	5	24 Apr 2009, 16 Oct 2009
268		<i>Eudocima homaena</i> Hübner, [1823] 1816	f, l	2	1 Dec 1989, 1 Nov 1991
269	231	<i>Eudocima phalonia</i> (Linnaeus, 1763)	f, w	1	16 Oct 2009
270	232	<i>Goniocraspedon mistura</i> (Swinhoe, 1891)	f, l	1	16 Oct 2009
271	234	<i>Oraesia emarginata</i> (Fabricius, 1794)	f, w	3	16 Oct 2009
272		<i>Oraesia excavata</i> (Butler, 1878)	f, w	1	31 Oct 1989
273		<i>Plusiodonta coelonota</i> (Kollar, 1844)	f, w	1	18 Jul 1992

Erebidae - Hyphenodinae

274	328	<i>Luceria oculalis</i> (Moore, 1877)	f, w	1	16 Oct 2009
275	329	<i>Luceria striata</i> Galsworthy, 1997	pVU HK; f, w	1	24 Apr 2009

Erebidae - Boletobiinae

276	264	<i>Maguda suffusa</i> (Walker, 1863)	c, w	3	24 Apr 2009, 16 Oct 2009
-----	-----	--------------------------------------	------	---	--------------------------

Erebidae - Aventiinae

277	217	<i>Cerynea contentaria</i> (Walker, 1861)	c, w	2	16 Oct 2009
278	218	<i>Cerynea discontenta</i> Galsworthy, 1998	pNT HK; f, w	5	24 Apr 2009, 16 Oct 2009
279	219	<i>Cerynea ustula</i> (Hampson, 1898)	c, w	4	24 Apr 2009
280	220	<i>Lasperyria ruficeps</i> (Walker, 1864)	vc, w	6	24 Apr 2009, 16 Oct 2009
281	221	<i>Corgatha trichogyia</i> Hampson, 1907	f, w	1	24 Apr 2009
282	195	<i>Enispa elataria</i> (Walker, 1861)	c, w	3	16 Oct 2009
283	222	<i>Metaemene atriguttata</i> (Walker, 1862)	f, w	2	24 Apr 2009, 16 Oct 2009
284	223	<i>Ataboruza semilux</i> (Walker, 1865)	s, l	1	16 Oct 2009

Erebidae - Araeopteroninae

285	203	<i>Araeopteron amoenum</i> Inoue, 1958	r, rd	1	16 Oct 2009
286	204	Araeopteroninae sp. A	r, rd	1	24 Apr 2009

Erebidae - Eublemminae

287	287	<i>Eublemma albostrata</i> Wileman & West, 1929	f, l	1	24 Apr 2009
288	288	<i>Eublemma baccalix</i> (Swinhoe, 1886)	f, l	1	24 Apr 2009
289	289	<i>Eublemma ragusana</i> (Freyer, 1845)	c, w	6	24 Apr 2009

Erebidae - Anobinae

290	250	<i>Crithote horridipes</i> Walker, 1864	c, w	3	24 Apr 2009
291	269	<i>Plecoptera luteiceps</i> (Walker, 1865)	c, w	1	24 Apr 2009
292	276	<i>Tephriopsis divulsa</i> (Walker, 1865)	c, w	2	12 Aug 2006, 16 Oct 2009

Erebidae - Erebiniae

293	235	<i>Arsacia rectalis</i> (Walker, 1863)	c, w	1	16 Oct 2009
294	236	<i>Bastilla absentimacula</i> (Guenée, 1852)	c, l	1	24 Apr 2009
295	237	<i>Bastilla analis</i> (Guenée, 1852)	f, l	2	16 Oct 2009
296	238	<i>Bastilla crameri</i> (Moore, [1885] 1884-1887)	u, l	2	23 Aug 2007, 24 Apr 2009
297	239	<i>Bastilla maturata</i> (Walker, 1858)	f, w	1	24 Apr 2009
298	240	<i>Bastilla maturescens</i> (Walker, 1858)	u, l	3	24 Apr 2009, 16 Oct 2009
299	241	<i>Bastilla simillima</i> (Guenée, 1852)	u, l	4	24 Apr 2009, 16 Oct 2009
300	247	<i>Calesia haemorrhoea</i> Guenée, 1852	r, rd	2	16 Oct 2009
301	248	<i>Chalciope mygdon</i> (Cramer, 1777)	f, w	3	16 Oct 2009
302	251	<i>Dysgonia stuposa</i> (Fabricius, 1794)	f, w	2	Oct 2006, 16 Oct 2009
303	253	<i>Ericeia elongata</i> Prout, 1929	c, w	1	16 Oct 2009
304	254	<i>Ericeia inangulata</i> (Guenée, 1852)	u, l	5	24 Apr 2009, 16 Oct 2009
305	255	<i>Ericeia subcinerea</i> (Snellen, 1880)	vc, w	3	24 Apr 2009, 16 Oct 2009
306	259	<i>Hypopyra contractipennis</i> (Joannis, 1912)	f, l	1	16 Oct 2009
307	260	<i>Hypopyra vespertilio</i> (Fabricius, 1787)	c, w	2	24 Apr 2009
308	267	<i>Ophiusa tirhaca</i> (Cramer, 1780)	u, l	1	24 Apr 2009
309	268	<i>Oxyodes scrobiculata</i> (Fabricius, 1775)	c, w	3	12 Aug 2007, 24 Apr 2009
310	279	<i>Erebus ephesperis</i> (Hübner, [1823] 1816)	c, w	1	24 Apr 2009
311	280	<i>Mocis frugalis</i> (Fabricius, 1775)	c, w	1	16 Oct 2009

312	281	<i>Mocis undata</i> (Fabricius, 1775)	c, w	6	24 Apr 2009, 16 Oct 2009
313	282	<i>Pantylidia metaspila</i> (Walker, [1858] 1857)	r, rd	1	24 Apr 2009
314	283	<i>Rema costimacula</i> (Guenée, 1852)	vc, w	4	24 Apr 2009, 16 Oct 2009
315	284	<i>Rhesala imparata</i> Walker, 1858	c, w	1	16 Oct 2009
316		<i>Spirama retorta</i> (Clerck, 1759)	u, w	1	20 Jun 2008
317		<i>Tinolius hypsana</i> Swinhoe, 1889	u, l	2	26 Mar 1989, 1 Jun 2010
				2 (larva)	12 May 2008, 4 Aug 2008

Erebidae - unplaced to subfamily

318	242	<i>Blasticorhinus enervis</i> (Swinhoe, 1890)	f, w	3	24 Apr 2009, 16 Oct 2009
319	243	<i>Blasticorhinus rivulosa</i> (Walker, 1865)	f, w	1	24 Apr 2009
320	244	<i>Bocula diffisa</i> (Swinhoe, 1890)	u, w	2	24 Apr 2009, 16 Oct 2009
321	245	<i>Bocula marginata</i> (Moore, 1882)	c, w	3	24 Apr 2009, 16 Oct 2009
322	246	<i>Britha pactalis</i> (Walker, [1859] 1858)	u, l	2	24 Apr 2009, 16 Oct 2009
323	249	<i>Chorsia albiscripta</i> (Hampson, 1897)	c, w	1	16 Oct 2009
324	270	<i>Chorsia perversa</i> (Walker, 1863)	r, rd	8	24 Apr 2009, 16 Oct 2009
325		<i>Egnasia seclusalis</i> (Walker, [1866] 1865)	c, w	1	9 Aug 2009
326	252	<i>Ercheia cyllaria</i> (Cramer, 1779)	c, w	4	24 Apr 2009, 16 Oct 2009
327	256	<i>Erygia apicalis</i> Guenée, 1852	c, w	3	24 Apr 2009
328	257	<i>Gesonia obeiditalis</i> Walker, [1859] 1858	c, w	1	16 Oct 2009
329	258	<i>Hepatica irrorata</i> (Wileman & South, 1917)	s, rd	1	16 Oct 2009
330	261	<i>Ischyja manlia</i> (Cramer, 1766)	c, w	2	24 Apr 2009, 16 Oct 2009
331	262	<i>Lophathrum comprimens</i> (Walker, 1858)	c, w	4	24 Apr 2009, 16 Oct 2009
332	263	<i>Loxioda similis</i> (Moore, 1882)	f, w	1	16 Oct 2009
333	265	<i>Mecodina agrestis</i> (Swinhoe, 1890)	f, l	1	24 Apr 2009
334	266	<i>Mecodina diastriga</i> Hampson, 1926	s, l	1	24 Apr 2009
335	271	<i>Saroba pustulifera</i> Walker, 1865	c, w	3	24 Apr 2009, 16 Oct 2009
336	272	<i>Sarobides inconclusa</i> (Walker, [1863] 1864)	f, l	1	16 Oct 2009
337	273	<i>Sympis rufibasis</i> Guenée, 1852	c, w	3	24 Apr 2009, 16 Oct 2009
338	274	<i>Tamba apicata</i> (Hampson, 1902)	c, l	1	24 Apr 2009
339	275	<i>Taviodes fulvescens</i> Hampson, 1926	s, rd	1	16 Oct 2009
340	277	<i>Ugia purpurea</i> Galsworthy, 1997	pNT HK; vc, w	5	24 Apr 2009, 16 Oct 2009

Euteliidae - Euteliinae

341	295	<i>Anuga multiplicans</i> (Walker, 1858)	f, w	1	24 Apr 2009
-----	-----	--	------	---	-------------

Nolidae - Noliniinae

342	337	<i>Barasa acronyctoides</i> Walker, 1862	f, w	1	24 Apr 2009
343	340	<i>Manoba brunellus</i> (Hampson, 1893)	c, w	3	16 Oct 2009
344	341	<i>Melanographia flexilineata</i> (Hampson, 1898)	c, w	1	16 Oct 2009
345	343	<i>Nola marginata</i> Hampson, 1895	f, w	1	24 Apr 2009
346	344	<i>Nola pumila</i> Snellen, 1875	c, w	4	24 Apr 2009
347	345	<i>Nola</i> sp. C nr. <i>cretacea</i>	f, w	2	24 Apr 2009, 16 Oct 2009
348	346	<i>Nolini</i> sp. indet. #1	dd	1	24 Apr 2009

Nolidae - Chloephorinae

349		<i>Carea varipes</i> Walker, [1857] 1856	c, w	1	9 Aug 2009
350	338	<i>Garella ruficirra</i> (Hampson, 1905)	u, rd	1	24 Apr 2009
351	339	<i>Giaura multipunctata</i> Swinhoe, 1919	c, l	1	16 Oct 2009
352		<i>Labanda semipars</i> (Walker, 1858)	s, l	1	10 Apr 1989
353	347	<i>Paracrama dulcissima</i> (Walker, [1863] 1864)	c, w	1	24 Apr 2009

Nolidae - Westermanniinae

354	342	<i>Negeta signata</i> (Walker, [1863] 1864)	c, w	1	24 Apr 2009
-----	-----	---	------	---	-------------

Nolidae - unplaced to subfamily

355	348	<i>Selepa celtis</i> Moore, 1858	f, w	1	16 Oct 2009
356	349	<i>Selepa discigera</i> (Walker, [1863] 1864)	u, l	1	24 Apr 2009

Noctuidae - Plusiinae

357 *Chrysodeixis eriosoma* (Doubleday, 1843) c, w 1 15 May 2004

Noctuidae - Bagisarinae

358 290 *Amyna axis* (Guenée, 1852) f, w 2 16 Oct 2009
 359 291 *Amyna punctum* (Fabricius, 1794) f, w 3 24 Apr 2009, 16 Oct 2009
 360 224 *Chasmina fasciculosa* (Walker, 1858) u, l 1 24 Apr 2009
 361 225 *Ramadasa pavo* (Walker, 1856) r, rd 1 24 Apr 2009
 362 *Xanthodes transversa* Guenée, 1852 f, w 3 (larvae) 12 May 2008, 5 Sep 2009
 21 Sep 2009

Noctuidae - Eustrotiinae

363 292 *Maliattha separata* Walker, 1863 f, w 2 16 Oct 2009
 364 293 *Maliattha signifera* (Walker, [1858] 1857) c, w 1 24 Apr 2009

Noctuidae - Acontiinae

365 194 Acontiinae genus & sp. B HK r, rd 3 24 Apr 2009
 366 230 *Ecpatia longinqua* (Swinhoe, 1890) c, w 6 20 Jun 1992, 16 Oct 2009

Noctuidae - Acronictinae

367 196 *Belciana scorpio* Galsworthy, 1997 pVU HK; f, l 2 24 Apr 2009
 368 197 *Typracrona obliqua* Moore, 1882 f, l 1 16 Oct 2009

Noctuidae - Agaristinae

369 *Episteme lectrix* (Linnaeus, 1764) u, w 1 16 Sep 1988
 370 201 *Mimeusemia postica* (Walker, 1862) c, w 1 24 Apr 2009
 371 202 *Sarbanissa albifascia* (Walker, 1865) u, w 1 24 Apr 2009

Noctuidae - Condicinae

372 278 *Condica conducta* (Walker, [1857] 1856) c, w 16 24 Apr 2009, 16 Oct 2009

Noctuidae - Eriopinae

373 285 *Callopietria apicalis* (Walker, 1855) c, w 1 16 Oct 2009
 374 286 *Callopietria exotica* (Guenée, 1852) c, w 5 24 Apr 2009, 16 Oct 2009

Noctuidae - Noctuinae

375 294 *Pseudeustrotia semialba* (Hampson, 1894) c, w 2 24 Apr 2009
 376 304 *Spodoptera litura* (Fabricius, 1775) c, w 6 1 Aug 2008, 16 Oct 2009
 377 296 *Athetis bremusa* (Swinhoe, 1885) c, w 1 16 Oct 2009
 378 297 *Athetis cognata* (Moore, 1882) c, w 5 16 Oct 2009
 379 298 *Athetis hongkongensis* Galsworthy, 1997 pNT HK; c, w 2 24 Apr 2009
 380 299 *Athetis obtusa* (Hampson, 1891) u, w 4 24 Apr 2009
 381 300 *Athetis ochracea* (Hampson, 1894) u, l 1 16 Oct 2009
 382 301 *Athetis thoracica* (Moore, [1885] 1884-1887) f, w 2 16 Oct 2009
 383 *Paradiopa postfusca* (Hampson, 1893) c, w 1 18 Jul 1992
 384 305 *Tiracola aureata* Holloway, 1989 c, w 2 24 Jul 1992, 16 Oct 2009
 385 306 *Trachea auriplena* (Walker, 1857) f, w 1 24 Apr 2009
 386 302 *Mythimna moorei* (Swinhoe, 1902) s, l 1 16 Oct 2009
 387 303 *Mythimna reversa* (Moore, [1885] 1884-1887) c, w 6 16 Oct 2009